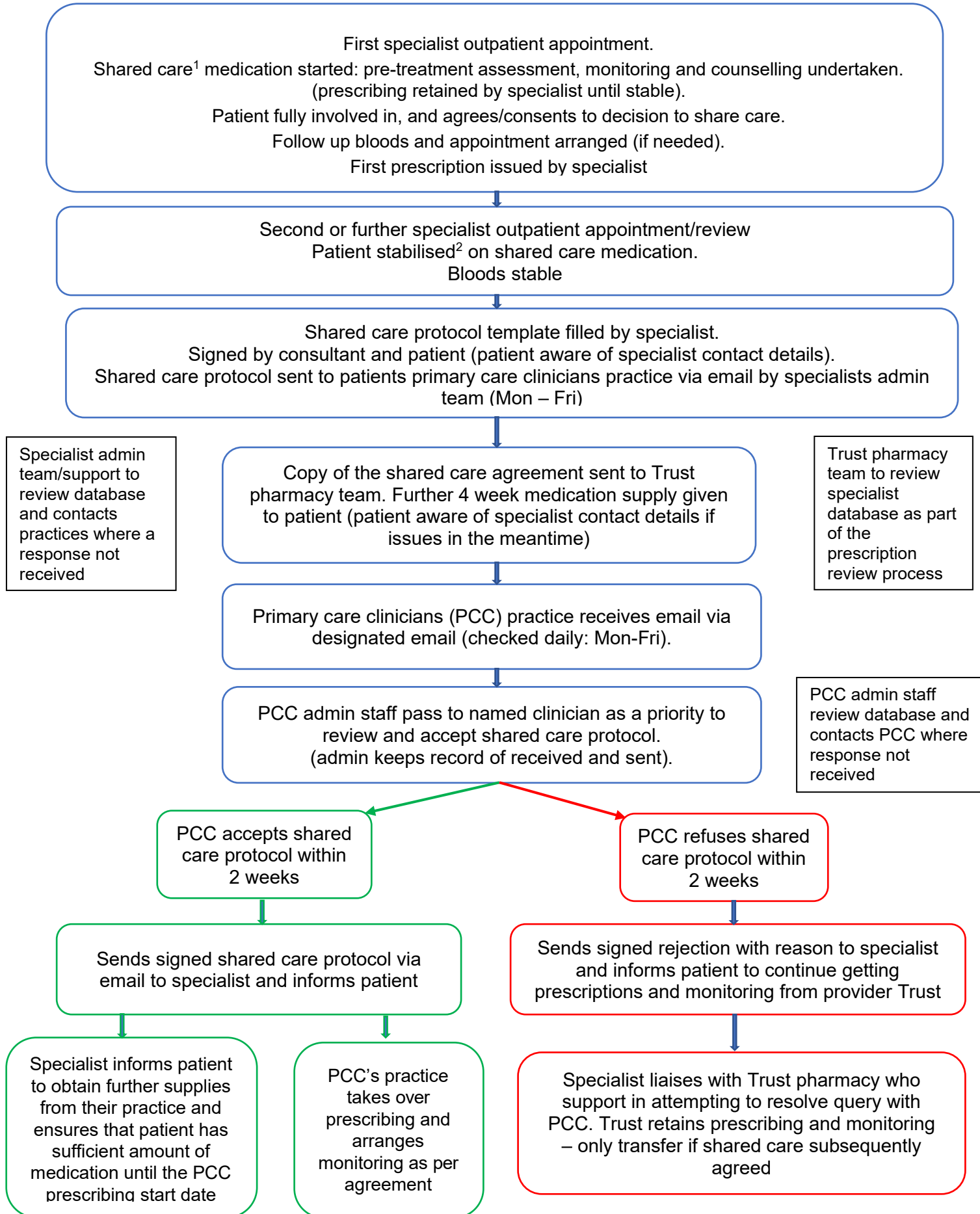


## Shared care process flowchart for new patients



<sup>1</sup>Shared care is defined as the sharing of prescribing and monitoring responsibilities between specialist services and primary care for high risk drugs. Specialist services includes secondary care, mental health services, community providers, private providers and tertiary care and primary care clinicians includes GPs and all primary care non-medical prescribers.

<sup>2</sup> Usually a minimum of three months from treatment start date.

<b>Acknowledgements</b>	Mid and South Essex CCGs Medicines Management Teams
<b>Version</b>	1.0
<b>Author</b>	HCPMSEMOC working group
<b>Approved by</b>	MSEMOC
<b>Date Approved</b>	July 2021
<b>Review Date</b>	July 2026 or sooner if subject to any new updates nationally